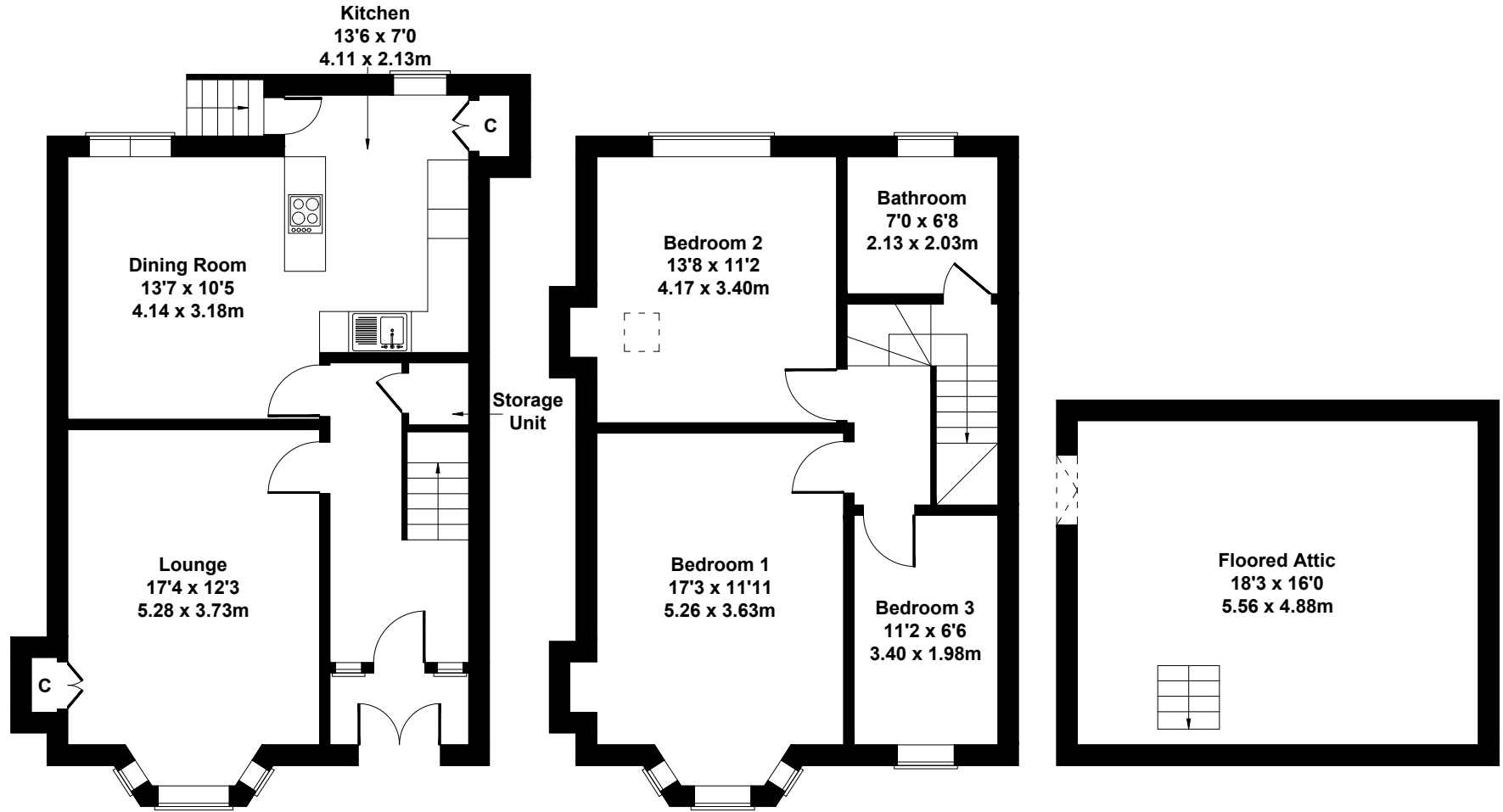


19 Ballogie Road, Kings Park, Glasgow G44 4SZ.

Approximate Gross Internal Area

1486 sq ft - 138 sq m



GROUND FLOOR

FIRST FLOOR

SECOND FLOOR

SKETCH PLAN FOR ILLUSTRATIVE PURPOSES ONLY

All measurements walls, doors, windows, fittings and appliances, their sizes and locations, are approximate only. They cannot be regarded as being a representation by the seller, nor their agent.